



# Data sheet



## DDS2007 - Data Acquisition Software



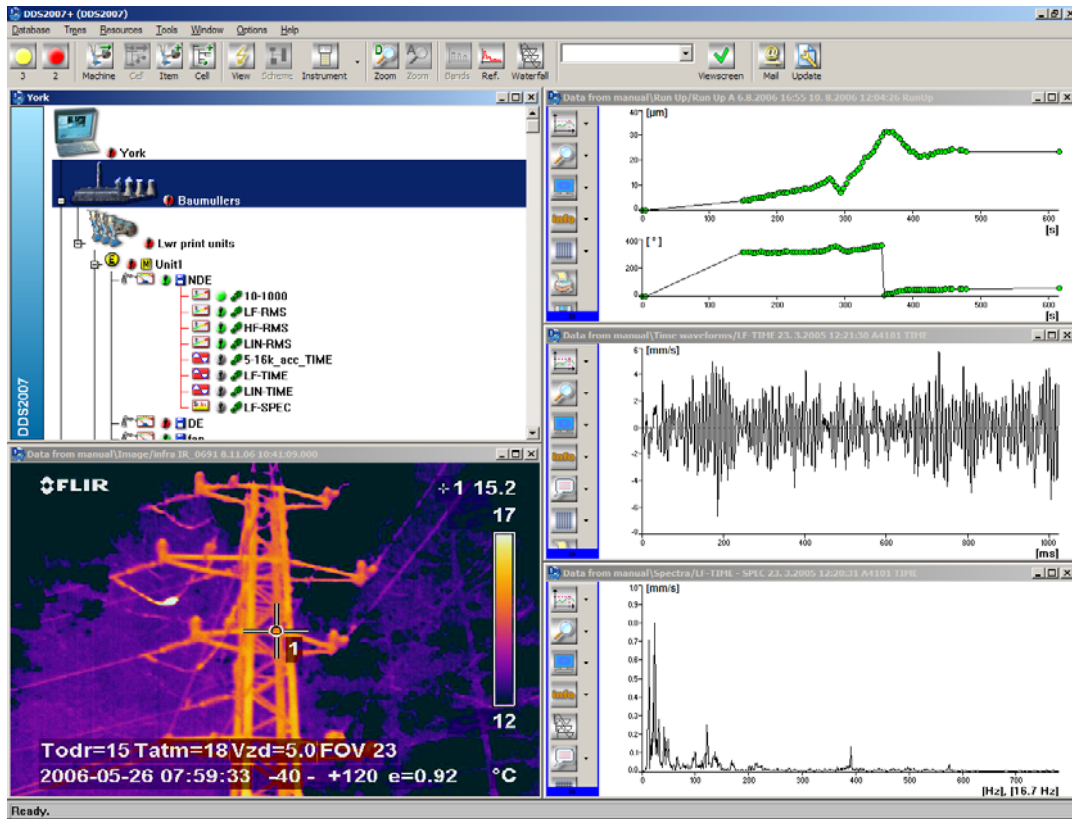
### Application:

- ✧ Vibro-diagnostic software for portable and desktop monitoring and security systems
- ✧ Software for A4101, A4201, A4300 manual devices
- ✧ Software for A3600 on-line monitoring systems
- ✧ Current display of measured data for control sites

### Characteristics:

- ✧ Only one database system for data collection (off-line and on-line systems)
- ✧ Enables the transfer, evaluation, analysis and archiving of diagnostics data
- ✧ Modularity of the system enables to select a required configuration
- ✧ Optional basic configurations of DDS 2007 – Trend, Pro, View
- ✧ Modules for the diagnostics of bearings, transmission gears, electrical engines
- ✧ Possible work in networks, open architecture, authentication of users
- ✧ Use of the SQL and ODBC standards for data administration - creation of database, database backup, database restore, database repair, database compact, user password setting, multi-user net system
- ✧ Export of data to superior information systems
- ✧ Tools - band graphs, report book, responsible person, schemes, reports, icon-bitmaps of tree items, data reduction, local setting of program
- ✧ Database tree - fast view of data, support for insert graphics artworks - prints, schemes, indication of total number warnings and dangerous, indication of status for each item, indication of measurement time schedule, indication of new data, indication of graphics artwork

- Static data – trends, type of static data - real or complex, process values – temperature, pressure, RPM, load, etc. , global-data view, global-data editing, trends - Fast View, warning levels: real and complex (amplitude and phase), absolute and relative warning levels, 4 levels for each type - absolute or relative, over and under alarm setting, global setting of warning and alarm levels
- Graphs of static data, cursor - single, delta cursor, grid, view of levels, marks, zoom, move – dynamic or manual, automatic or fix scaling, over trend view, edit data function



- Graphs of spectra, cursor – single, harmonic, side-band, delta, delta max, band-cursor, trend-cursor, x axis – lin, log, OKT/1, OKT/3, Hz, RPM, order, y axis – lin, log, auto or fix scaling, grid, zoom, move – dynamic or manual, automatic or fix scaling, marks – local maximum, select of unit – acceleration, velocity, displacement, derivation and integration of signal, view – amplitude, phase, real/imag, trend, polar trend, waterfall diagram, process values, edit data function
- Graphs of time waveforms, cursor – single, delta, y axis – auto or fix scaling, grid, zoom, move – dynamic or manual, automatic or fix scaling, marks – local maximum, select of unit, view – amplitude, orbits, edit data function
- Graphs of orders, cursor – order, y axis – auto or fix scaling, grid, zoom, move – dynamic or manual, automatic or fix scaling, select of unit, view – amplitude, phase, real/imag, trend, polar trend, waterfall, process values, edit data function
- Minimum system requirements: Intel® Pentium® 300 MHz or compatible, CD ROM or DVD drive, 128 MB RAM, 20 MB hard disk space, SVGA or higher resolution monitor (min. 800x600, 256 color)
- Microsoft® Windows® XP, Vista

The DDS 2007 software system represents a powerful tool for storage and evaluation of vibration and technical diagnostics data. It allows the user to connect and work with data collected by portable data collectors and on-line systems. In the full configuration, it includes all the functions necessary for data transfer, evaluation, analysis and data storage. The modular arrangement enables beginners and less experienced users to select the most simple system version, which can be expanded in the future. By using standard Windows technologies, the program operation is very simple and clear.

The common database for portable and on-line is a unique feature of the DDS 2007. Optional instrument interfaces allow the user to connect all measuring instruments supplied by Adash to a single database system. This feature saves your money and time. The DDS 2007 system also fully supports route measurements.

The database of the DDS 2007 system uses SQL and ODBC standards to process data. It is an open system which can receive and send information to other information systems. The DDS 2007 system fulfils all network operation requirements. Several users at the same time may work with one database.

The DDS 2007 system conception is modular so that the user can select a configuration which corresponds, in terms of price and features, to the user's needs. There are two basic types: the Trend and Pro versions. DDS Trend is intended for beginners and for users who only require the measurement and evaluation of trends. It is also a standard part of on-line monitoring systems that measure and transmit static data only. DDS Pro is intended for more experienced users and specialists. The DDS Pro system offers all the tools necessary for the analysis of frequency and time signals.

DDS Pro Plus is the DDS Pro system extended by a special diagnostic or customer module. There are modules for antifriction bearings, gearbox and electric motors diagnostics.

Diagnostic data often needs to be made available to many users without allowing the users to make any changes. The DDS View system is a read-only version of the software which contains all analysis tools but not tools which allow the user to modify the database or to gather new data. DDS View is intended especially for operating and controlling personnel who continuously need information of the status of the equipment.

Output reports, data communication, a fast processing of output messages or reports were among the basic requirements imposed on DDS 2007. A built-in report generator which can include charts and photographs enables a fast and efficient communication with the other company departments. Individual outputs may be in printed or electronic form. Electronic outputs can be used for Internet-based consultations and communication within the system of e-diagnostics available through [www.adashservice.cz](http://www.adashservice.cz).